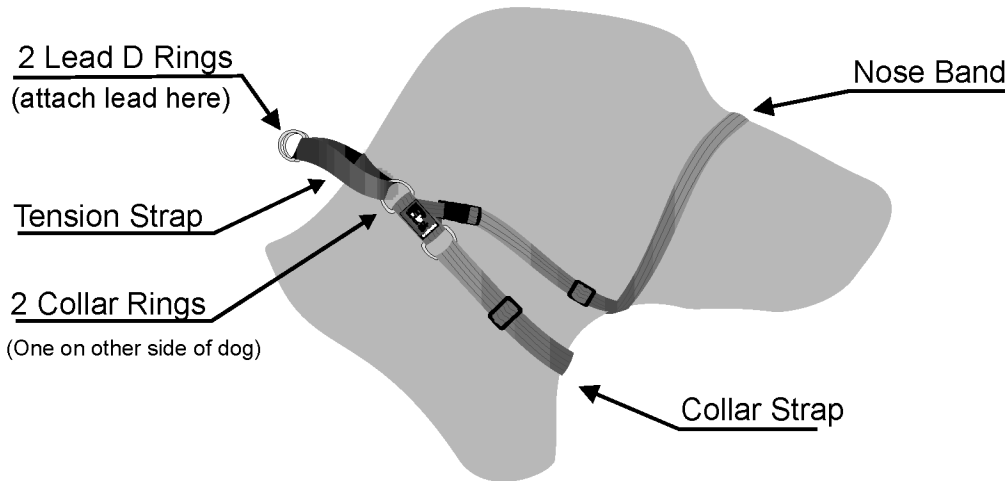
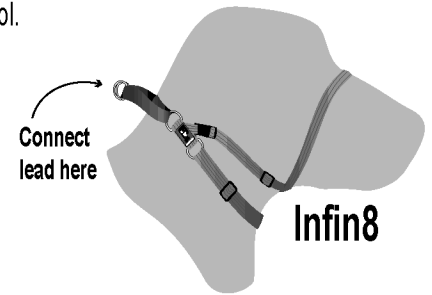




The **Infin8 Halter** is a radical re-think of what a head halter can be. A complete redesign, combining a figure 8 halter with a martingale collar to create a brand new training tool.

Downloaded from Black Dog web site www.blackdog.net.au

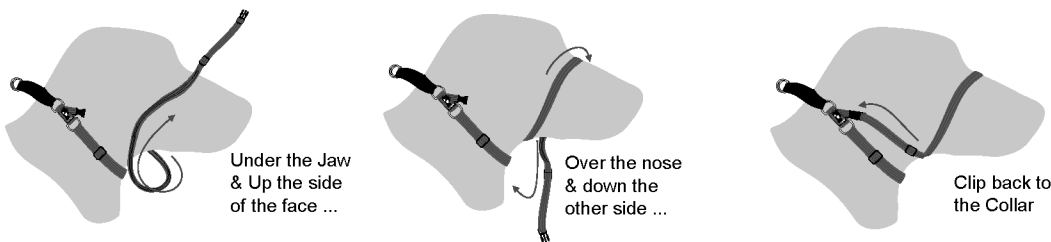
© Copyright Black Dog Wear Pty Ltd 2008



Fitting the Infin8 Halter

- ▶ Before trying to fit the Infin8 - Unclip the Nose Band and lengthen the collar strap to its full length.
- ▶ Fit the Infin8 Collar over the dog's head, **have the unclipped Nose Band on the dog's Left Side**. Pull the 2 Lead D Rings together and use the small clasp on one of the straps to hold them in place.
- ▶ Now loop the Nose Band around the dog's muzzle. Start by taking the Nose Band under the dog's jaw then, keeping it back behind the mouth come up the side of the face and over the bridge of the nose just in front of the eyes, then back down the other side of the face and under the jaw again to complete an untwisted loop around the face. Clip the Nose Band to the Collar Strap.
- ▶ Adjust the length of the Nose Band so that the 2 Collar Rings (the ones that the black shiny webbing pass through) stay at least 4 cm apart when you pull on the 2 Lead D Rings - this sets the Nose Band length for your dog.
- ▶ Now adjust the Collar Strap, so the collar remains loose when you pull on the 2 Lead D rings. A loose fitting collar is best to start with - on medium sized dogs 4 fingers should easily fit between the neck & collar.
- ▶ Attach a lead and your dog is ready to go.

Remember to reward your dog whenever you first fit the Halter and particularly during the 1st few weeks of using.



When walking your dog, only light to medium pressure is required on the lead, as the **Infin8 Halter** is extremely effective in calming a pulling, or boisterous dog. No need for harsh corrections, or gruff training techniques. If your dog pulls while wearing the Infin8, apply pressure to the lead, then release, pressure, then release, (don't allow yourself to get into a "tug of war" match with your dog). The moment your dog stops pulling, praise and reward the behaviour.

After your dog learns not to pull and consistently walks on a loose lead, you can start to ease some pressure off the Nose Band by making it a little longer. If the pulling starts again, you've gone too far, too quickly. Work in slow steps, gradually lengthening the Nose Band, checking your dog is consistently walking on a loose lead and remember to reward this good behaviour.

The **Infin8** gives you powerful control over your dog and some dogs will resist this at first, it's like throwing a tantrum when they don't get what they want. If this happens it is best to ignore this behaviour, choose fun and engrossing things to do to distract your dog from focusing on the halter. Use food, or other rewards as your dog accepts wearing and walking on the Infin8. It won't take long before you and your dog will both be enjoying walks, with your dog accepting and respecting your control. Don't leave the **Infin8 Halter** on your dog once you have finished your walk and Don't tether your dog wearing a Halter.